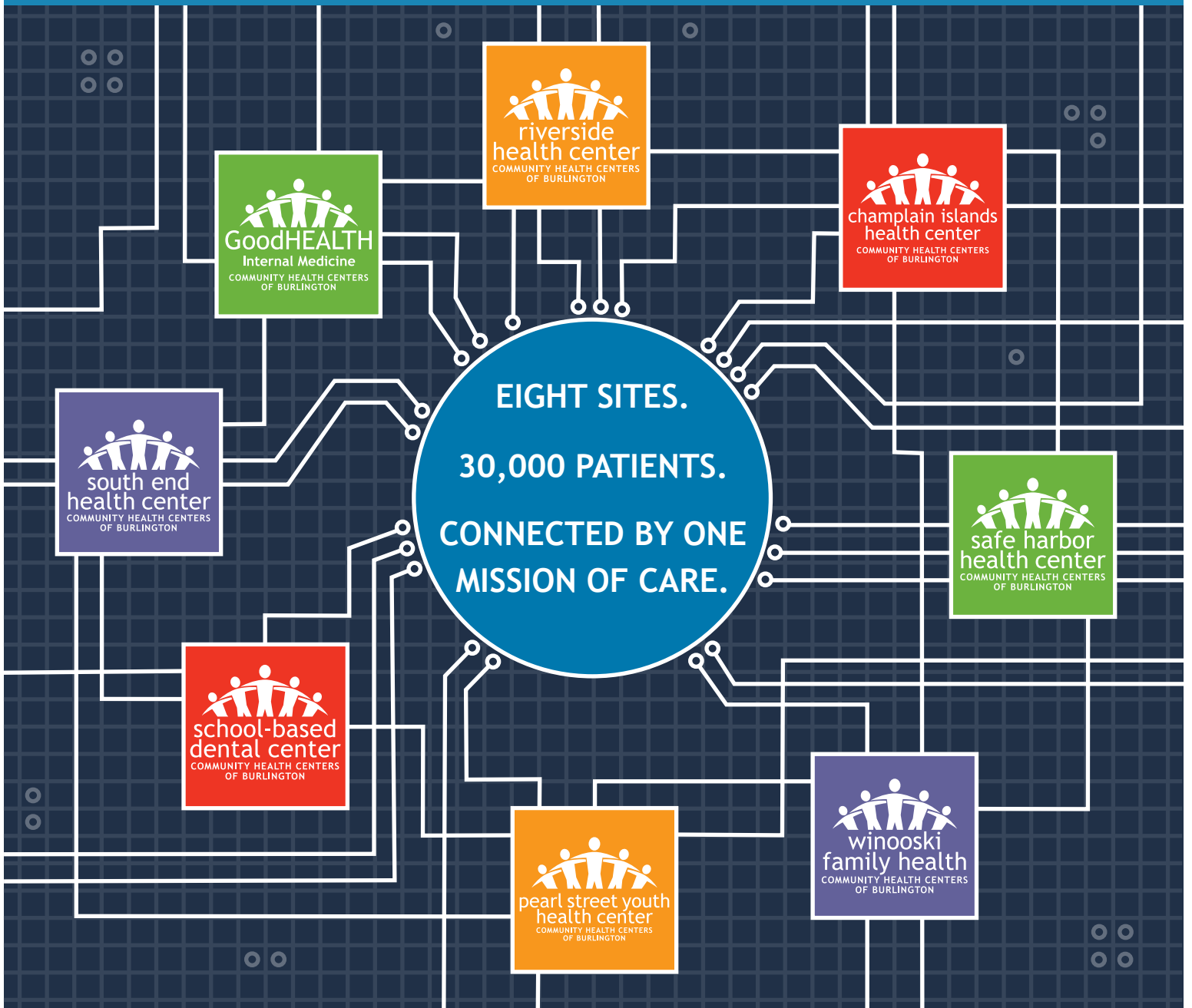


ANNUAL IMPACT REPORT



2017



HIGHLIGHTS FROM THE YEAR



CHCB subsidized
\$514,421
through our Sliding-Fee Scale
Financial Assistance Program
to make care affordable and
accessible for patients.

Knowing that New Americans
and LEP community residents
often struggle with barriers to
primary health care, CHCB
provided 16,498 interpreter-
assisted visits, ensuring
culturally competent care.



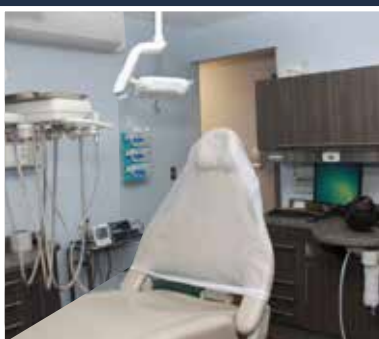
CHCB merged with an existing practice in South Burlington, GoodHEALTH Internal Medicine, in July 2016. This partnership provided increased access to Federally Qualified Health Center services, such as low-cost prescriptions and dental care, to over 6,000 patients, many of whom are elderly.



357

CHCB patients received
Suboxone Treatment
as part of Vermont's
ongoing fight against
opioid addiction.

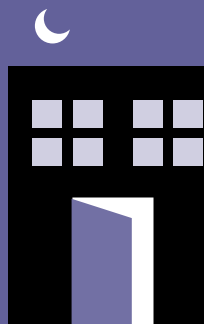
CHCB's School-Based Dental
Center expanded by one
operatory through philan-
thropic giving. This site
provided dental services
to 638 low-income and/or
uninsured children from the
Burlington School District.



Creating convenient
access on Pine Street,
CHCB opened a new
dental center in our
South End Health
Center.



CHCB took the lead on Burlington's
only low-barrier Winter Warming
Shelter, a 35-bed facility that
provided safety, warm meals and
connection to services for 179
members of the local homeless
population from November 2016
through April 2017.



CHCB's Champlain Islands Health Center began
seeing patients in a brand new building in
December 2016. Located in South Hero, this
location expands access to medical and mental
health care for residents of southern Grand Isle
County. With philanthropic support, we hope to be
able to bring dental care to this underserved area
soon as well.

STATEMENT OF OPERATIONS FOR FISCAL YEAR 2017

May 1, 2016 - April 30, 2017

STATEMENT OF FINANCIAL POSITION

ASSETS	
Cash	\$ 3,588,092
Investments	\$ 1,113,957
Accounts Receivable	\$ 2,129,826
Other Current Assets	\$ 2,271,767
Total Current Assets	\$ 9,103,642
Fixed Assets	\$ 16,939,645
Other Assets	\$ 655,133
TOTAL ASSETS	\$ 26,698,420
LIABILITIES & EQUITY	
Accounts Payable	\$ 557,818
Accrued Payroll/Related Expenses	\$ 1,466,150
Deferred Revenue	--
Current Portion Long-Term Debt	\$ 112,112
Total Current Liabilities	\$ 2,136,080
Long-Term Debt	\$ 2,478,202
<i>Equity</i>	
Fund Balances	\$ 22,084,138
TOTAL LIABILITIES & EQUITY	\$ 26,698,420

STATEMENT OF ACTIVITIES

INCOME	
Contributions	\$ 531,372
Net Patient Revenue	\$ 17,808,011
Grants Received (Federal, State and Foundation)	\$ 4,224,576
Other Revenue	\$ 2,666,555
TOTAL INCOME	\$ 25,230,514
EXPENSES	
Salaries and Benefits	\$ 19,095,425
Professional Fees	\$ 1,233,274
Supplies	\$ 1,274,327
Other Operating Expenses	\$ 4,163,962
TOTAL EXPENSES	\$ 25,766,988
NET INCOME FROM OPERATIONS	\$ (536,474)
NET INCOME	\$ (216,801)

A NOTE ON FINANCIALS

CHCB's financial audit of 2017 represents a year of transition and historic growth. We packed a lot into one year, bringing on new sites, adding new programs and serving a record-setting number of 125,538 patient visits. In tandem, expenses rose and contributed to our first loss in several years. While CHCB has a good ratio of cash on hand, this deficit sets the stage for a recalibration in this next fiscal year. In 2018, CHCB's financial strategy moving forward is to remain laser-focused on building efficiencies of scale and managing new growth and expenses. Long term, CHCB is readying for payment reform in a rapidly-changing health care environment.

Philanthropy continues to play a vital role in our financial sustainability and ability to nimbly move innovative ideas from the drawing board into action. Private donor

funding sustained projects such as Beacon Apartments, a housing project for chronically homeless individuals, a Patient Survival Fund for unanticipated medical-related expenses, loan repayment for early career community health clinicians, and special projects such as walking groups. Donor-supported capital investments were vital to our Dental Program, providing access to oral health services for all ages at three sites throughout Chittenden County. Looking forward, philanthropy will remain a crucial support in an era of uncertainty in federal funding and allow for continued innovative public health interventions.



Alison Calderara, CEO

“Everyone here at CHCB makes hard situations easier and happy situations that much more enjoyable. Thank you so much!”

- CHCB PATIENT



617 Riverside Avenue
Burlington, VT 05401

RETURN SERVICE REQUESTED

CHCB Board of Directors

- Chris Perrera, M.B.A. (President)
- Kelley Newell (Vice President)
- Rob Gibson (Treasurer)
- Holly Moriglioni (Secretary)
- Gary Bergeron, M.B.A., C.P.A.
- Sonam Chophel
- Thomas Dettre, C.P.A.
- Paul Fontaine
- Michael George
- Meg O'Donnell, Esq.
- Richard Taylor
- Steve Yurasits

Non Profit Org
US Postage
P A I D
Permit #402
Burlington, VT

OUR MISSION

Our mission is to improve the health of all within the communities we serve. As a non-profit organization, we are dedicated to providing exceptional care with respect and compassion and with a commitment to serving people regardless of financial status or life circumstance.

THANK YOU

As a nonprofit organization, we certainly could not accomplish all we have over the past year without the generous support of our donors. Please contact Kim Anderson, Director of Development and Communications, to see the complete list from Fiscal Year 2017.

CONNECT WITH US

www.chcb.org



Facebook
vtchcb



Twitter
@chcbvt



LinkedIn
Community Health Centers of Burlington



YouTube
VTCHCB

The Community Health Centers of Burlington is a 501(c)(3) non-profit and Federally Qualified Health Center funded in part through a grant from the U.S. Department of Health & Human Services and generous community support. CHCB is a Health Center Program grantee under 42 U.S.C. 254b, and a deemed Public Health Service employee under 42 U.S.C. 233(g)-(n).

All CHCB programs and services are accessible to people with disabilities. This report is available in alternative formats upon request.

Notice of Privacy: The Community Health Centers of Burlington protect the health information of our patients and gift information of our donors in all of our activities including our fundraising work. If you no longer wish to receive newsletters, fundraising appeals, or event invitations from us, please contact the CHCB CR&D Department at 617 Riverside Avenue, Burlington, VT 05401, kanderson@chcb.org, or call (802) 264-8193.

